



## **“Practice Makes Entrepreneurs” Training Course for Youth Workers and Leaders**

**05-12.02.2019**

**Osterholz-Scharmbeck (Bremen), Germany**

### **Brief Description of the training course**

The new era which is profoundly marked by the economic crisis and more specifically by the radical degradation of the economic sector in the majority of the European countries, the enhancement of the components that make up both the theoretical and practical aspects of entrepreneurship might constitute one of the main keys for the consolidation of the situation. Accordingly, the reinforcement of the practical education on entrepreneurship by the NGOs and CSOs will definitely entail a flourishing of the entrepreneurial dynamism in our communities, whilst the practical application of concrete educational methods related to entrepreneurship by youth workers, will enable young people to come in touch with an array of soft skills, thus ensuring their coveted entry into the business arena.

Taking into consideration the current situation in the majority of European countries, the international training course ‘Practice Makes Entrepreneurs’ is seeking to equip youth workers and leaders who work directly with young unemployed people with essential business and entrepreneurial knowledge and skills, in order to make them capable to indicate ‘alternative paths’ correlated with the labor market, thus contributing to the limitation of the unemployment among youth. Specifically, by saying ‘alternative paths’, it’s being implied the promotion of self-employment and a general cultivation of an entrepreneurial culture. The above target will be accomplished through a combination of practical knowledge provision on entrepreneurship, and a parallel cultivation of a positive way of thinking within the side-paths of self-awareness and self-motivation.

Specifically, participants will experience various practical exercises -mostly based on non-formal education methods- which will qualify them with entrepreneurial knowledge that can be utilized to equip young people with essential skills, in order to be ready to take entrepreneurial decisions concerning complex socioeconomic conditions. Consequently, the subsequent application of those practical methods-exercises within different local contexts, also aims at the dissemination of alternative entrepreneurial methods, thus contributing to the eradication of various obstacles, such as discrimination and inequality in opportunities; problems which are frequently being encountered by young people, especially in the deprived and rural areas of the E.U.

**Group size and Partners:**

Target group of this project will be 32 youth workers and active members of youth organizations coming from Germany, Romania, Spain, Italy, Denmark, Cyprus, Bulgaria, Estonia, Martinique (France), Greece, Latvia and Slovakia.

**Working Language:**

Working language of the training course is English.

**Particular objectives:**

- To provide practical tools using non-formal education that inspire young people to take entrepreneurial action.
- To create a space to reflect on educational non-formal tools related to entrepreneurship and pave the way for their transferability and further development.
- To develop entrepreneurial competences that make use of the non-formal education in youth work in order to stimulate self-employment and entrepreneurial culture among unemployed youth.
- To develop a sustainable network among youth organizations which are being associated with entrepreneurship within EU and create stronger partnerships for future projects in the European context.

**Profile of the Participants:**

- Age mainly 18-40
- Youth workers, youth leaders, activists
- Able to work in English
- Willing to share the new knowledge with the members of his/her organization once he/she gets back, act as multipliers
- Active learners, available for the whole duration of the course and ready to share their experience and knowledge;
- Motivated to take an active part in all the stages of the training course

**Costs:**

Board and accommodation will be covered by the hosting organization.

The travel costs will be reimbursed for the cheapest and direct way of transport and only under the condition that the participant will take part in the whole project. The travel costs will be reimbursed up to the certain amount according to Erasmus+ rules. Only the tickets that were confirmed by us will be reimbursed.

Project participation fee is 40 Euro (to be paid at the training course).

Maximum Travel Costs for each Partner Country according to Erasmus+ Distance Calculator:

Organization, country	Number of participants	Maximum amount of travel costs per participant in Euro
JuBuK, Germany	3	50
CIP, Cyprus	2	360
BYF, Bulgaria	2	275
Danish Youth Team, Denmark	2	275
NÜH, Estonia	2	275
D'ANTILLES ET D'AILLEURS, France	2	750
USB, Greece	3	275
SOCIALE YOUNG EFFECT, Italy	2	275
WORLD-OUR HOME, Latvia	2	275
SYTEV, Slovakia	2	275
KAEB-NAI, Spain	3	275
GEYC, Romania	3	275

**Travel reimbursement:**

Reimbursement will be done via bank transfer after the receipt of all travel documents including boarding passes. The tickets should be sent immediately after the activity.

**Further Rules regarding the booking of the tickets and reimbursement:**

- The selected participants choose flight connections and send them to us or via the partners for confirmation. Please don't book any tickets without our confirmation.
- Only the cheapest tickets will be reimbursed. We will not cover tickets with the deviation from the direct route, extra unnecessary stops and layovers. We don't cover seat reservation fees, leisure plus tickets, flexible tariff tickets, extra travel insurances, priority boarding fees. Only 1 piece of checked-in baggage of maximum 15-23 kg will be covered.
- Only tickets purchased online will be reimbursed. We can't cover travel agencies' fees. Travel agencies invoices for the flight tickets won't be accepted for reimbursement.
- We can't reimburse taxi or private cars, only public transport will be covered.
- You can arrive 2-3 days before the activity and depart 2-3 days after if you want to spend more time in Germany on your own, provided that the tickets on these days are not more expensive than on the official travel days.

-Eurowings, Ryanair, Wizzair tickets should be purchased only on the websites of the airlines. Tickets purchased via KIWI website won't be reimbursed.

**PRINT** your flight tickets and invoices and give them to us at the training course. Online Check-in (per email in PDF) is highly recommended, then you can't lose the boarding passes.

**Arrival Day is the 5<sup>th</sup> of February—you can arrive at any time on this day. The dinner will be served at about 8 p.m. Better to arrive earlier as the last bus leaves Bremen train station at 7 p.m. after this time it will be more complicated to reach the venue though still possible.**

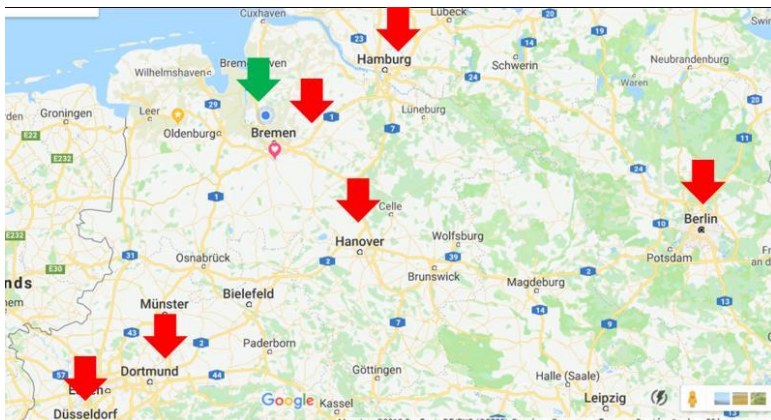
**Departure Day is the 12<sup>th</sup> of February- you can depart any time on this day. There will be only breakfast on this day. It is better to have the flight not too early to be able to reach the airport using public transport.**

### Some information about the airports around Osterholz-Scharmbeck (Bremen):

There are several possibilities how you can reach our location, so before booking the tickets we kindly ask you to check all of them and to find the cheapest one. Before booking the flight for each participant we ask the partners to send us the flight details and price, we will check and confirm or ask to book another alternative.

### The nearest airports:

- Bremen** – the nearest airport
- Hamburg**- cheap flights by Ryanair, Wizzair and many other airlines.
- Hannover** –Ryanair, Wizzair and other airlines
- Dortmund** - cheap flights by Wizzair and others
- Berlin**- all possible airlines



You can fly to Bremen, Hamburg, Hannover, Berlin, Cologne, Frankfurt, Dusseldorf or Dortmund. It will take you 1.5-4h of trains or busses to reach Osterholz-Scharmbeck. We can reimburse only the cheapest possible travels, so please try to find the cheapest/most suitable flights.

Ryanair flies to Bremen, Hamburg, Hannover, Berlin, Cologne, Dusseldorf and Dortmund.

Wizzair flies to Hannover, Dortmund, Dusseldorf, Hamburg and Berlin.

Busses you can find on [www.flixbus.com](http://www.flixbus.com) (you have internet on the bus)

Trains you can find on [www.bahn.de](http://www.bahn.de)

From Bremen Central Station (Bremen Hauptbahnhof) you should take bus 660 in direction Hagen, and get of at the station Bunder Wehr Logistikschule (BW Logistikschule), where we will wait for you (its 5 min walk to KulturHaus).



**660**

**Bremen → Bremen-Burg → Garlstadt → Hagen**

Auf dieser Linie gelten die VBN Kundengarantien



Verkehrsverbund Bremen/Niedersachsen (VBN), Tel.: 0421 / 59 60 59  
Weser-Ems-Bus, Niederlassung Oldenburg

Verkehrsbeschränkungen	Montag - Freitag							Samstag				Sonn- und Feiertag		
	1660 001	1660 003	1660 005	1660 007	1660 009	1660 011	1660 013	1660 015	1660 017	1660 019	1660 021	1660 023	1660 025	1660 027
Hinweise														
Bremen, Hauptbahnhof ⊕ J	6.45	9.00	12.15	14.30	16.35	17.35	19.00	8.50	14.20	18.40	9.50	14.20	18.40	
Bremen, Gröpelingen	7.00	9.15	12.30	14.45	16.50	17.50	19.15	9.05	14.35	18.55	10.05	14.35	18.55	
Bremen, Mittelsb. Landstraße	7.05	9.20	12.35	14.50	16.55	17.55	19.20	9.10	14.40	19.00	10.10	14.40	19.00	
Bremen, Bahnhof Burg ⊕ 4	7.09	9.24	12.39	14.54	16.59	17.59	19.24	7.10	9.14	14.44	19.04	10.14	14.44	19.04
Bremen, Goldbergplatz	7.11	9.26	12.41	14.55	17.01	18.01	19.26	7.11	9.15	14.45	19.06	10.16	14.45	19.06
Ritterhude-Ihlpohl, Tankstelle	7.13	9.28	12.43	14.58	17.03	18.03	19.28	7.13	9.18	14.48	19.08	10.18	14.48	19.08
Ritterh.-Stendorf, Gasth. Walde	7.15	9.30	12.45	15.00	17.05	18.05	19.30	7.15	9.20	14.50	19.10	10.20	14.50	19.10
Ritterh.-Stendorf, Feuerwehr	7.17	9.32	12.47	15.02	17.07	18.07	19.32	7.17	9.22	14.52	19.12	10.22	14.52	19.12
Ritterh.-Werschenr., Abzw. Werschenrege	7.18	9.33	12.48	15.03	17.08	18.08	19.33	7.18	9.23	14.53	19.13	10.23	14.53	19.13
OHZ-Heilshorn, Brücke	7.21	9.36	12.51	15.06	17.11	18.11	19.36	7.21	9.26	14.56	19.16	10.26	14.56	19.16
OHZ-Heilshorn, Dorfstraße	7.23	9.38	12.53	15.08	17.13	18.13	19.38	7.23	9.28	14.58	19.18	10.28	14.58	19.18
OHZ-Heilshorn, Weißes Haus	7.25	9.40	12.55	15.10	17.15	18.15	19.40	7.25	9.30	15.00	19.20	10.30	15.00	19.20
OHZ-Garlstadt, Birkenheide	7.27	9.42	12.57	15.12	17.17	18.17	19.42	7.27	9.32	15.02	19.22	10.32	15.02	19.22
OHZ-Garlstadt, BW Logistikschule	7.28	9.43	12.58	15.13	17.18	18.18	19.43	7.28	9.33	15.03	19.23	10.33	15.03	19.23
OHZ-Garlstadt, Heidehof	7.29	9.44	12.59	15.14	17.19	18.19	19.44	7.29	9.34	15.04	19.24	10.34	15.04	19.24
OHZ-Garlstadt, Hasselbrock	7.30	9.45	13.00	15.15	17.20	18.20	19.45	7.30	9.35	15.05	19.25	10.35	15.05	19.25
Hoope, Pape	7.34	9.49	13.04	15.19	17.24	18.24	19.49	7.34	9.39	15.09	19.29	10.39	15.09	19.29
Hoope, Abzw. Wulsbüttel	7.35	9.50	13.05	15.20	17.25	18.25	19.50	7.35	9.40	15.10	19.30	10.40	15.10	19.30
Dorfhagen, Siedlung	7.37	9.52	13.07	15.22	17.27	18.27	19.52	7.37	9.42	15.12	19.32	10.42	15.12	19.32
Dorfhagen, Zollhaus	7.38	9.53	13.08	15.23	17.28	18.28	19.53	7.38	9.43	15.13	19.33	10.43	15.13	19.33
Dorfhagen, Breden	7.39	9.54	13.09	15.24	17.29	18.29	19.54	7.39	9.44	15.14	19.34	10.44	15.14	19.34
Hagen, Börsten Abzw. Finna	7.40	9.55	13.10	15.25	17.30	18.30	19.55	7.40	9.45	15.15	19.35	10.45	15.15	19.35
Hagen, Börsten	7.41	9.56	13.11	15.26	17.31	18.31	19.56	7.41	9.46	15.16	19.36	10.46	15.16	19.36
Hagen, Döhrnweg	7.43	9.58	13.13	15.28	17.33	18.33	19.58	7.43	9.48	15.18	19.38	10.48	15.18	19.38
Hagen, Schulzentrum ⊕ 2	7.45	10.00	13.15	15.30	17.35	18.35	20.00	7.45	9.50	15.20	19.40	10.50	15.20	19.40

The last bus is at 19:00, so if you cannot make it by then, let us know, we will explain you which train you should take.

If you hesitate or not sure how to book your flight, feel free to ask us, we will be happy to help you. ☺

*Small tip: Our venue is situated close to such beautiful cities as Hamburg and Bremen, which are worth visiting. Unfortunately, we can't promise you will be able to have enough time to visit them during the project (although we're planning to make one free afternoon), that's why we would recommend you to come 1 or 2 days before the beginning or to leave Germany 1 or 2 days later after the end of the project, if you want to visit these cities. (\*please, keep in mind, that we provide the accommodation and board only during the training course).*

**Insurance:** Every participant should have valid health insurance for Germany during your stay on the project. This means that when you don't have your own insurance, the organizer doesn't bear any responsibilities towards the participants. That is why every participant should timely purchase their own insurance.

For the project partners and confirmed participants there is a **facebook group**. Please join for easy communication and sharing:

<https://www.facebook.com/groups/316515912288436/>

### About the accommodation:

**Venue: KulturHaus, Osterholz-Scharmbeck (near Bremen)**

Address: Hinterm Horn 5, 27711 Osterholz-Scharmbeck

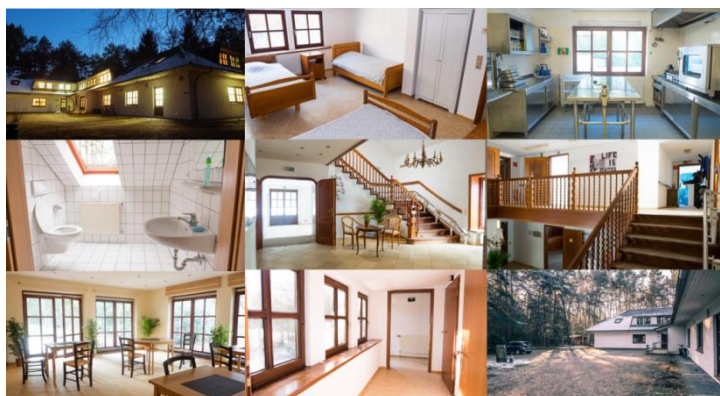
We are going to stay in a very simple accommodation something like youth hostel, which is actually old group house in a middle of nowhere. We have chosen this venue in particular because of few reasons:

- It is in the middle of nowhere. This means the group will stay together at all times. There are no cafes, no discos, no restaurants, even no supermarket nearby. We will all get to know each other very well.
- The rooms are going to be 2-4 beds per room. We are going to be from mixed nationalities, but from the same gender.
- We will be the only group in the house. It was important to us not to be bothered with other groups and other timetables and rules, so that is why we decided to come here where we would be alone. We would do workshops, make party, make national evenings, cook and eat together, load the dishwasher, and make sure that the door is locked at night. We would make the rules together, we would respect the rules that we make.
- There are showers in 7 of the rooms, for some rooms there are group showers and there are 4 more shower rooms just in front of the room.
- We have hired our own cooking and logistics team so they would prepare meals for us, we can tell them the things that we want to eat, but also that nice and healthy food will be done for the people with food preferences – vegetarians, no pork and so on. Please note that we cannot provide vegan, HALAL or fruitarian food. We are not staying at a hotel, so don't expect hotel environment.
- Everything will be up to us, meaning that everyone should help with something. Either is setting up the dining tables in order, loading or unloading the dishwasher, or helping with the workshops places, or setting up the fireplace, or bringing wood for the fireplace, or just not littering and making a mess in the house.

In regard to what do you need in concern to the venue:

- **Shoes for inside.** Since we would be staying inside most of the time, and it's a really large house, you would need shoes for inside (slippers or clean shoes) the house. There is a policy of no "normal" shoes inside. It also helps us keep the place clean during our time there.
- **Bring your own towel.** There will be bed sheets provided from the venue, but you have to take a towel with you.
- **Please make sure that you take any medication that you need.** There will be list of emergency doctors' offices available for consultation when needed (so please make sure that you have insurance or that your national insurance card covers Germany)





## Food & Drinks & Dishes

Dining times:

08:30 - 09:30 Breakfast

13:30 – 15:30 Lunch

20:00 – 21:00 Dinner

Water is really clean, good quality and drinkable from the tap, tea and coffee will be available during breaks and meals.

There will be two coffee breaks with approximate times 11:30 and 16:30 every day. On the coffee breaks there will be tea and coffee available.

Please confirm your food preferences (no pork, vegetarian) on the registration form. Please have in mind that we cannot have special dishes for vegan or frutarian food. If you are allergic to any kind of food, please highlight it in the participant registration form.

## Dishes

After each meal every participant has the responsibility to throw the leftover food in the trash and to leave the plate and dishes in the appropriate place. We are all going to help with the kitchen team to clean the dishes. There is industrial dishwasher that washes the dishes in 3 minutes, we have to load it up and take the dishes out, our kitchen team will be there but everyone needs to help a bit.

## Internationnnal Nights:

There will be 2 international nights. Each international night will be prepared by 6 countries. For this purpose please bring your favourite food and drinks. There will be a possibility to use the kitchen for this occasion. Apart from food each country will make a short interactive creative presentation like a quiz, dance, song etc.

## Application form for the pre-selected participants:

<https://docs.google.com/forms/d/e/1FAIpQLSevUalvNI5QSACGAwz6rLD1PxVMqGPzQbToOw8KsLxYd4oDvg/viewform>